



Supplement No 3 – Conceptual Site Plan for New WTP

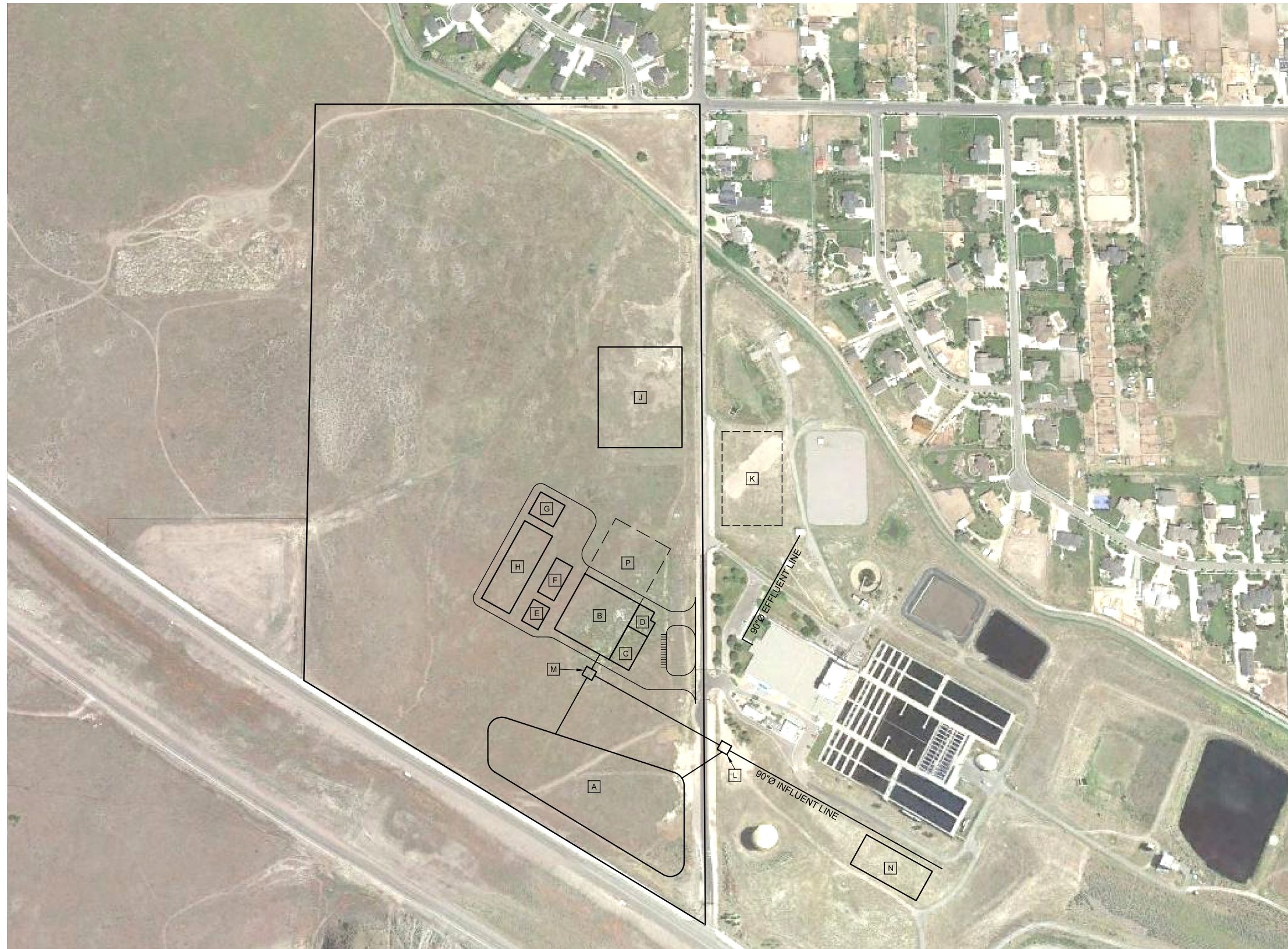
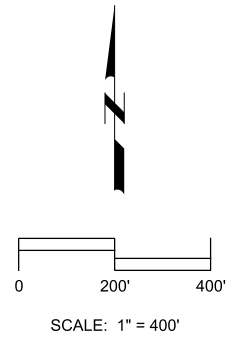
Project: Supplements to the JWTP Capacity and Site Optimization Study
Client: Jordan Valley Water Conservancy District **Issue Date:** January 11, 2016
Purpose: Evaluate existing filter underdrain replacement options **Project No.:** 9635B.00

3.0 INTRODUCTION

3.1 Project Purpose

Jordan Valley Water Conservancy District completed the Jordan Valley Water Treatment Plant Capacity and Site Optimization Study in July 2015 (Carollo Engineers). This report includes conceptual site plans for Alternative 4, a new WTP on the west side of 3200 West.

Figures 3.1 and 3.2 show two potential configurations with building sizes based on design criteria established in the Capacity and Site Optimization Study, specifically high rate sedimentation basins with plate settlers and filters rated at 6.0 gpm/sf.



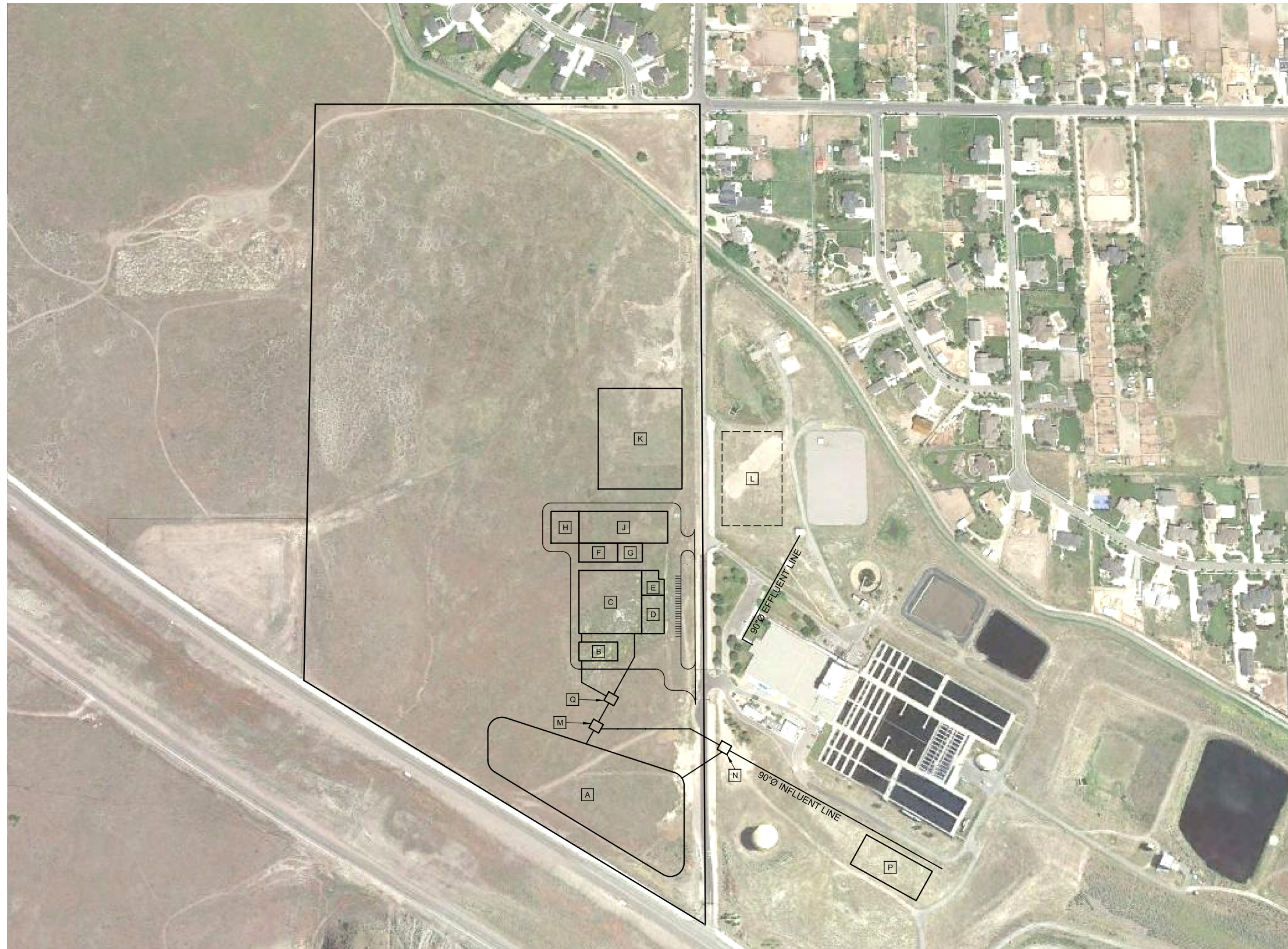
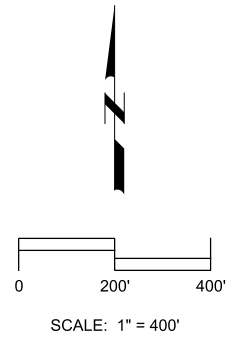
NEW FACILITIES INDEX

- A** 75 MG RAW WATER RESERVOIR
- B** FLOC/SEDIMENTATION BUILDING
- C** CHEMICAL BUILDING
- D** ADMINISTRATION BUILDING
- E** OZONE BUILDING
- F** OZONE CONTACTORS
- G** UV BUILDING
- H** FILTER BUILDING
- J** 15 MG FINISHED WATER RESERVOIR
- K** 12.5 MG FINISHED WATER RESERVOIR
- L** RAW WATER RESERVOIR INLET VALVE VAULT
- M** RAW WATER RESERVOIR OUTLET VALVE VAULT
- N** POTENTIAL SHARED OZONE FACILITY
- P** FUTURE FLOC/SEDIMENTATION BUILDING

SITE PLAN ALTERNATIVE A

Figure 3.1
 JORDAN VALLEY
 WATER CONSERVANCY DISTRICT





NEW FACILITIES INDEX

- [A] 75 MG RAW WATER RESERVOIR
- [B] PRE OZONE BUILDING
- [C] FLOC/SEDIMENTATION BUILDING
- [D] CHEMICAL BUILDING
- [E] ADMINISTRATION BUILDING
- [F] INTERMEDIATE OZONE BUILDING
- [G] OZONE GENERATOR BUILDING
- [H] UV BUILDING
- [J] FILTER BUILDING
- [K] 15 MG FINISHED WATER RESERVOIR
- [L] 12.5 MG FINISHED WATER RESERVOIR
- [M] RAW WATER RESERVOIR OUTLET VALVE VAULT
- [N] RAW WATER RESERVOIR INLET VALVE VAULT
- [P] POTENTIAL SHARED OZONE FACILITY
- [Q] PREOZONE VALVE VAULT

SITE PLAN ALTERNATIVE B
 Figure 3.2
 JORDAN VALLEY
 WATER CONSERVANCY DISTRICT



Prepared By:



Jeremy Williams, PE

jsw:lp

Attachments: none