

**ADDENDUM NO 1
TO
CONTRACT DOCUMENTS
FOR
DEEP WELL # 7 UNDERGROUND WELL IMPROVEMENTS
Page 1 of 10**

**DISTRICT PROJECT NO. 4312
10/21/2022**

This addendum is hereby attached to and made part of the Contract Documents. The addendum consists of 7 pages of written text (including this cover sheet) and 3 pages of drawings. Each Bidder shall acknowledge receipt of this addendum on the bid (page C-1) and by signing and attaching this addendum to the bid.

The following updates are made to the contract documents:

1. Column pipe lengths are updated on the bid schedule. Contractor shall submit correct bid schedule quantities. Bidders shall submit bid using the Bid Schedule Addendum 1.
2. Contractor shall furnish and install one isolation kit for the connection of the stainless-steel pump column and the cast iron discharge head.
3. Contractor shall furnish and install one Rossum manufactured sand tester at an existing well discharge access point as directed by engineer (<http://www.rossumsandtester.com/>).
4. Optional bid item- Chain Link drive gate-JVWCD owns the staging area immediately to the south of the DW7 site. Contractor at their option may access the west side of the pump building by cutting the existing vinyl coated chain link fence (with slats). If exercised, the contractor shall furnish a 12-ft (minimum) wide drive gate (matching existing fence with option to reuse fence fabric) at the access point. Two juniper bushes may be removed and not replaced (cap drip irrigation). The bid schedule has been updated to show this as a bid item. The bid item will be paid if the contractor completes this work for the future benefit of the District.

The bid date and time remain unchanged as 1:00 pm on October 27, 2022

JORDAN VALLEY WATER CONSERVANCY DISTRICT

David McLean

Senior Engineer

**ADDENDUM NO 1
TO
CONTRACT DOCUMENTS
FOR
DEEP WELL # 7 UNDERGROUND WELL IMPROVEMENTS
Page 2 of 10**

BIDDER'S CERTIFICATE

I acknowledge receipt of the foregoing Addendum No. 1 and accept all conditions contained therein.

Bidder: _____

By: _____

Signature

Date: _____



**DOCUMENT 00 41 00
BID SCHEUDLE (ADDENDUM 1)**

1.01 Unit Price Bids

A. Bidder will perform the following Work at the indicated unit prices:

Base Bid

Item No.	Description	Unit	Estimated Quantity	Bid Unit Price	Bid Amount
1	Mobilization / Demobilization	LS	1	\$	\$
2	Dual Swab Development	HR	150	\$	\$
3	Convert to Product Lubricated Pump System	LS	1	\$	\$
4	Modify Each Existing 8-Inch 316 SS Column Pipe Section	EA	15	\$	\$
5	Replace Epoxy Coated Low Carbon Pipe with New 8-Inch 316 SS Pipe	LF	105	\$	\$
6	Replace Column Shaft with new 316 SS Shaft	LF	305	\$	\$
7	New Column and Shaft Bearings	LS	1	\$	\$
8	Upgrade Pump Shaft Bearings to Stainless Steel Marine Rated	LS	1	\$	\$
9	Perform Testing and Repair on Existing Motor	LS	1	\$7,000.00	\$7,000.00
10	Reinstall Permanent Pumping Equipment	LS	1	\$	\$
11	<u>Furnish and Install Isolation Kits</u>	LS	1	\$	\$
12	<u>Furnish and Install New Rossum Sand Tester</u>	LS	1	\$	\$
13	<u>Furnish and Install 12-Foot Chain-link Gate</u>	LS	1	\$	\$
Total of All Unit Price Base Bid Items					\$
Total Unit Price Base Bid (in words): _____					



SECTION 01 02 50 MEASUREMENT AND PAYMENT

PART 1 - GENERAL

1.1 SECTION INCLUDES

- A. Measurement and payment criteria applicable to portions of the Work performed under a unit price payment method.

1.2 RELATED SPECIFICATIONS

- A. 00 41 00 Bid Form
- B. Agreement, Article V – Payment Procedures

1.3 MEASUREMENT OF QUANTITIES

- A. Measurement Devices:
 1. Weigh Scales: Inspected, tested and certified by the applicable state Weights and Measures department within the past year.
 2. Platform Scales: Of sufficient size and capacity to accommodate the conveying vehicle.
 3. Metering Devices: Inspected, tested and certified by the applicable State department within the past year.

1.4 PAYMENT

- A. Payment for each Bid item includes full compensation for all required labor, materials, products, tools, equipment, manufacturing, transportation, services, and incidentals; application or installation; permits, taxes, royalties, import costs, overhead and profit.

1.5 DESCRIPTION OF BID ITEMS

- A. The work generally consists of the following, which are numbered according to the Bid schedule found in the Bid Form:

1. **Mobilization / Demobilization** - Measurement and Payment shall be made by the lump sum and lump sum price shown on the bid schedule. Payment covers:
 - a. Payment covers cost of mobilization, demobilization, installation of temporary facilities, bringing all necessary construction equipment to the site, all bonds, insurances, permits and fees, traffic control, clearing and grubbing, snow removal to the well site, quality control of materials, preparation of project schedule, final cleanup and project closeout, and all other items not specifically called for in any other bid item or called for in the plans and specifications or is customary, incidental or appurtenant to performance of a complete project.
 - b. Payment will be made according to the following schedule:

Percent of Original Contract <u>Amount Earned</u>	Percent of Amount Bid for <u>Mobilization to be Paid</u>
5%	40
15%	20



40%	30
50%	10

2. **Dual Swab Development** - Measurement and Payment shall be made on an hourly basis and unit price shown on the bid schedule. Payment covers:
 - a. Dual swabbing with cable tool rig for a minimum of one pass down and up of the entire well depth and thereafter of all screened sections of the well.
 - b. Spending all the necessary time developing the sections specified in the well that produce more sand than others according to the Engineer's direction.
 - c. All pumping and temporary pump equipment.
 - d. All bailing and removing of pumped material.

3. **Convert to Product Lubricated Pump System** – Measurement and Payment shall be made by the lump sum and lump sum price shown on the bid schedule. Payment covers:
 - a. Disconnecting the existing pump lubrication system and all appurtenances (Pump already pulled by others).
 - b. Modify existing pump discharge head with new stuffing box, packing, gland, and bearings to accommodate new water lube system.
 - c. Reconfiguring existing pump lubrication system to include new 1/2-inch soldered copper piping with foam insulator, bypass line and ball valve, and pressure sensor with salvaged backflow preventer, strainer, solenoid valve, pressure gauge in line as shown in the drawings.
 - d. All required testing of product lubrication system

4. **Modify Each Existing 8-Inch 316 SS Column Pipe Section** – Measurement and Payment shall be made for each 20-foot section of existing 8-Inch SS column pipe successfully modified to be reconfigured in new design and unit price shown on the bid schedule. Payment covers:
 - a. Cutting each existing 20-foot section of 8-Inch stainless-steel column pipe in half to make 10-foot lengths each.
 - b. Purchase and weld new stainless-steel flanged ends onto newly cut column pipe to match diameter and bolt holes as existing.
 - c. Modify column flanges (every 10-feet) with recession to house new stainless-steel bearing retainers.

5. **Replace Epoxy Coated Low Carbon Steel Pipe with New 8-Inch 316 SS Pipe** – Measurement and Payment shall be made on a linear foot basis and unit price shown on the bid schedule. Payment covers:
 - a. Removing and disposing of existing epoxy coated low carbon steel pipe currently stored on site.
 - b. Purchasing and storing new 8-inch 316 stainless steel flanged column pipe.
 - c. Payment shall be made for the actual linear feet of new stainless-steel column pipe purchased and delivered to the site.

6. **Replace Column Shaft with New 316 SS Shaft** – Measurement and Payment shall be made on a linear foot basis and unit price shown on the bid schedule. Payment covers:
 - a. Removing and disposing of existing steel column shaft currently stored on site.
 - b. Purchasing and storing new 1 1/2-Inch 316 stainless-steel column shaft in 10-foot lengths.
 - c. Payment shall be made for the actual cost of stainless-steel shaft pipe purchased.

7. **New Column and Shaft Bearings** – Measurement and Payment shall be made on a lump sum basis and lump sum price shown on the bid schedule. Payment covers:

- a. Removing and disposing of existing bronze bearings in tube assembly currently stored on site.
 - b. Purchasing and storing new neoprene fluted bearings for the column shaft and new stainless-steel bearing retainers for the column pipe flanges.
 - c. Payment shall be made for the actual cost of bearings and retainers purchased for the column and shaft.
8. **Upgrade Pump Shaft Bearings to Stainless Steel Marine Rated** – Measurement and Payment shall be made on a lump sum basis and lump sum price shown on the bid schedule. Payment covers:
- a. Removing and disposing of existing bronze bearings from pump bowl shaft assembly currently stored on site.
 - b. Purchasing and installing new stainless-steel marine rated bearings for pump bowl shaft.
 - c. Payment shall be made for the actual cost of marine rated bearings purchased and installed to fit pump bowl shaft.
9. **Perform Testing and Repair on Existing Motor** – Measurement and Payment shall be made on a lump sum basis and lump sum price shown on the bid schedule. Payment covers:
- a. Perform testing on existing motor that has been stored outdoors on-site for the past year.
 - b. Assess the current condition of the existing motor and propose needed repairs if any.
 - c. Payment shall be made for the testing and assessment of the existing motor on site.
10. **Reinstall Permanent Pumping Equipment** – Measurement and Payment shall be made by the lump sum and lump sum price shown on the bid schedule. Payment covers:
- a. Cleaning pump bowl assembly and column pipe to be reused.
 - b. Reinstallation of existing modified pump with 305-feet of modified stainless-steel column pipe and 105-feet of new stainless-steel column pipe with 410-feet of new stainless-steel column shaft with new bearings and retainers.
 - c. Reinstallation of existing vertical turbine motor and well head.
 - d. Connection of new product lube system to well head.
 - e. Install rebuilt dielectric flange for the well head to casing connection.
 - f. Reconnection of all electrical systems.
 - g. Well startup and all required testing of the well pumping system.
 - h. Reinstallation of dielectric coupling between stainless steel column and cast-iron discharge head.
 - i. Replace continuity wire and connect to existing test head.
11. **Furnish and Install Isolation Kits – Measurement and Payment shall be made by lump sum and lump sum price shown on the bid schedule. Payment covers:**
- a. **Furnishing and installing isolation kits for the connection of the stainless-steel pump column to the cast iron discharge head.**
 - b. **Payment shall be made for the actual cost of isolation kits purchased and installed**
12. **Furnish and Install New Rossum Sand Tester – Measurement and Payment shall be made by lump sum and lump sum price shown on the bid schedule. Payment covers:**
- a. **Furnishing and installing new Rossum sand tester per manufacturers requirements.**
 - b. **Payment shall be made for the actual cost of sand tester purchased and installed.**



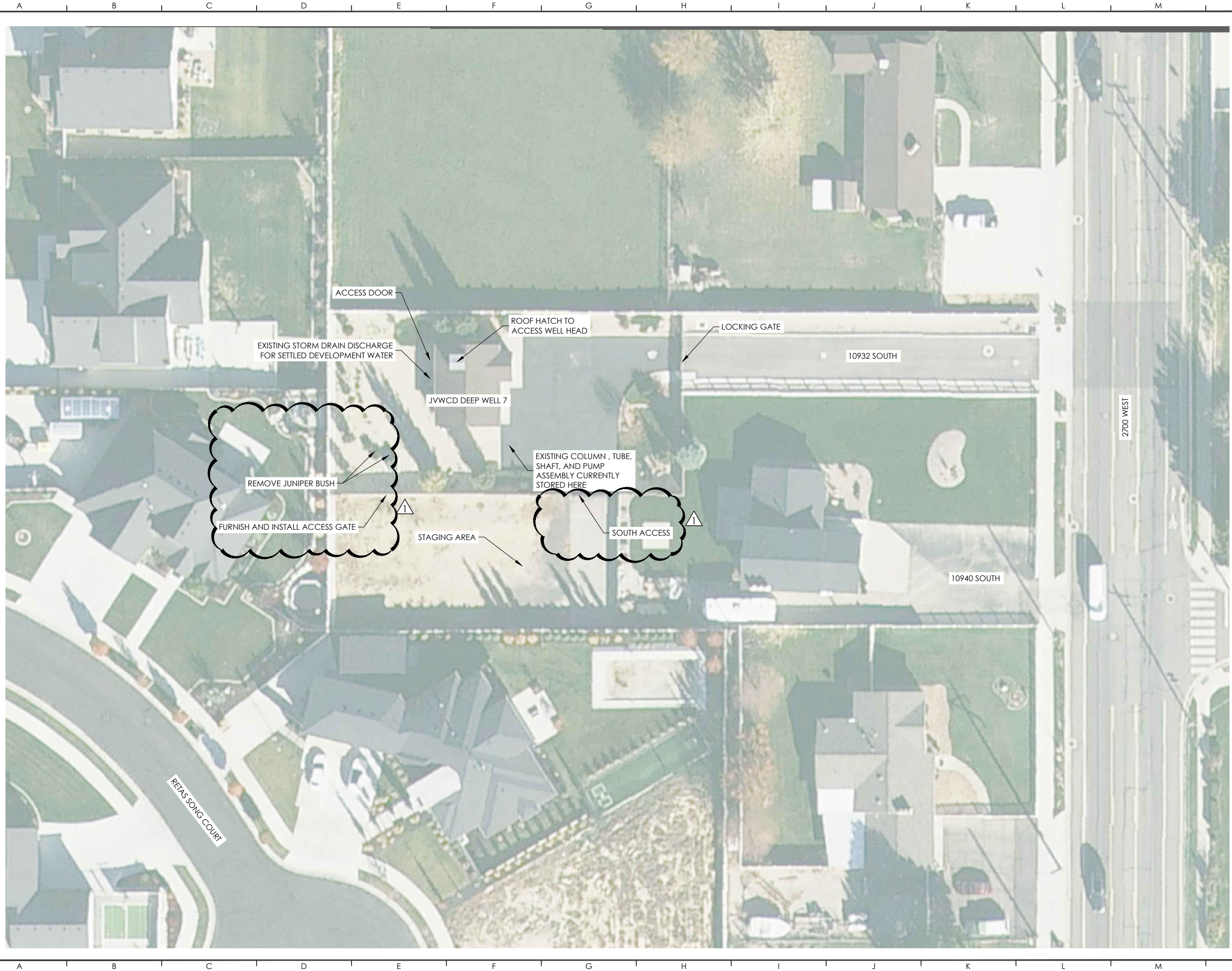
13. Furnish and Install 12-Foot Chain-link Double Swing Gate – Measurement and Payment shall be made by the lump sum and lump sum price shown on the bid schedule. Payment covers:

- a. **Furnishing and installing a 12-foot chain-link double swing gate at the south access to the site**

END OF SECTION

This Page Has Been Left Blank Intentionally

UT83-CF | 11:35 AM FRIDAY 21 OCTOBER 2022 | P:\2022-0307_JVWCD-DEEP WELL 7\DRAWINGS\SHEETS\3_CS101.DWG



CONTACT INFORMATION



4246 S RIVERBOAT RD., STE 200
SALT LAKE CITY, UT 84123
P: 801.359.5565



JORDAN VALLEY WATER
CONSERVANCY DISTRICT

REVISIONS

REVISION 1 10/18/22 M. CHANDLER

LEGAL NOTICE

THE INFORMATION CONTAINED IN THIS DRAWING IS THE PROPERTY OF CRS ENGINEERS AND IS NOT TO BE REPRODUCED, MODIFIED, OR USED FOR ANY OTHER PROJECT OR EXTENSION OF THIS PROJECT EXCEPT BY AGREEMENT WITH CRS ENGINEERS.

DESIGN



PRINCIPAL : MARK CHANDLER, P.E.
MANAGER : MARK CHANDLER, P.E.
REVIEWER : JORDAN DEMANN
DRAFTER : JORDAN DEMANN

PROJECT

2022-0307
21 OCTOBER 2022
**DEEP WELL 7
UNDERGROUND WELL
IMPROVEMENTS**

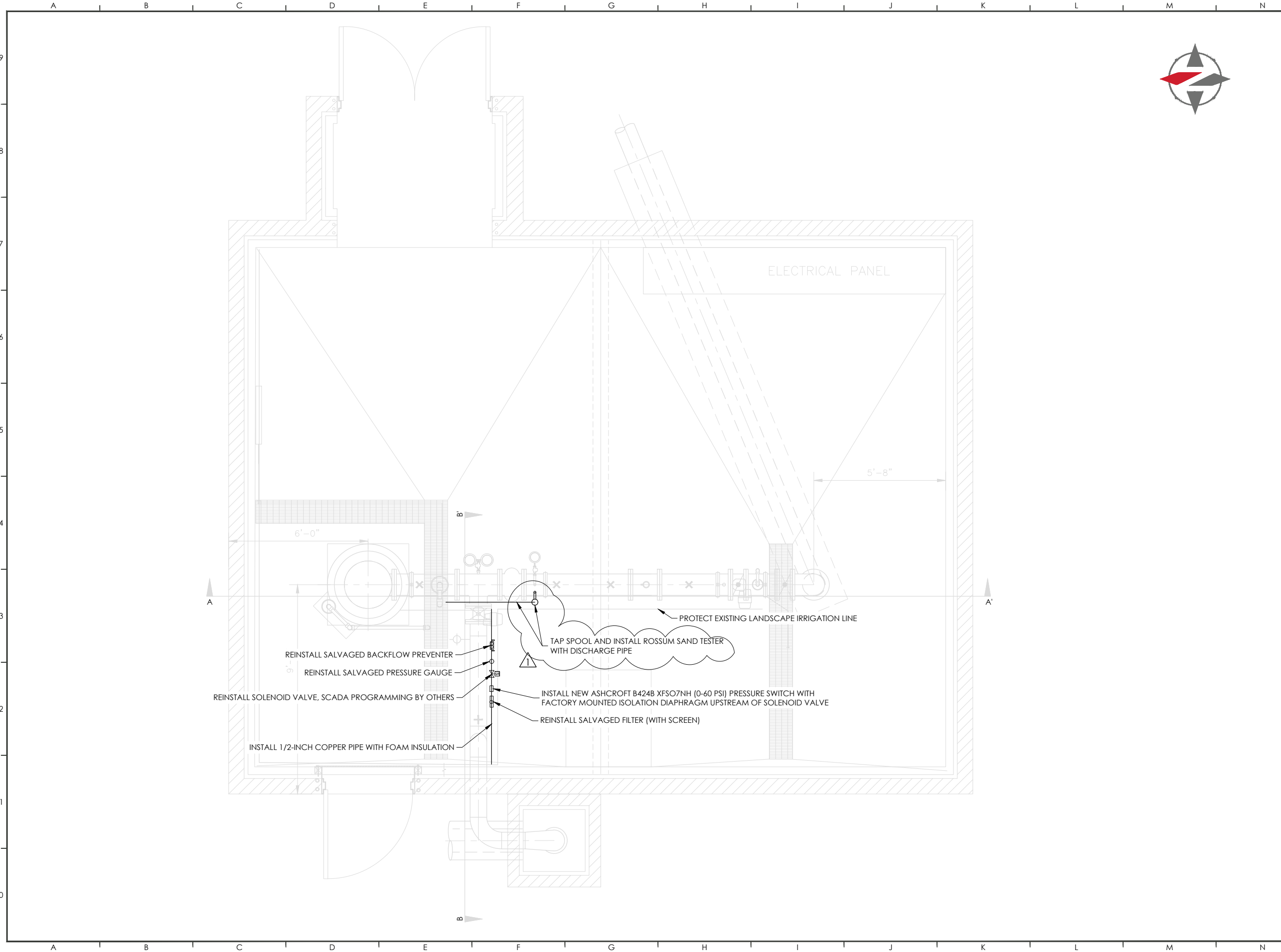
10932 SOUTH 2700 WEST SOUTH JORDAN,
UTAH 84095

WELL SITE OVERVIEW

3 OF 8

CS101

UT83-CF | 11:36 AM FRIDAY 21 OCTOBER 2022 | P:\2022-0307_JVW\CD-DEEP WELL 7\DRAWINGS\SHEETS\6 CU103.DWG



CONTACT INFORMATION



4246 S RIVERBOAT RD., STE 200
SALT LAKE CITY, UT 84123
P: 801.359.5565



JORDAN VALLEY WATER
CONSERVANCY DISTRICT

REVISIONS

REVISION 1 10/18/22 M. CHANDLER

LEGAL NOTICE

THE INFORMATION CONTAINED IN THIS DRAWING IS THE PROPERTY OF CRS ENGINEERS AND IS NOT TO BE REPRODUCED, MODIFIED, OR USED FOR ANY OTHER PROJECT OR EXTENSION OF THIS PROJECT EXCEPT BY AGREEMENT WITH CRS ENGINEERS.

DESIGN



PRINCIPAL : MARK CHANDLER, P.E.
MANAGER : MARK CHANDLER, P.E.
REVIEWER : JORDAN DEMANN, P.E.
DRAFTER : JORDAN DEMANN

PROJECT

2022-0307
21 OCTOBER 2022
**DEEP WELL 7
UNDERGROUND WELL
IMPROVEMENTS**

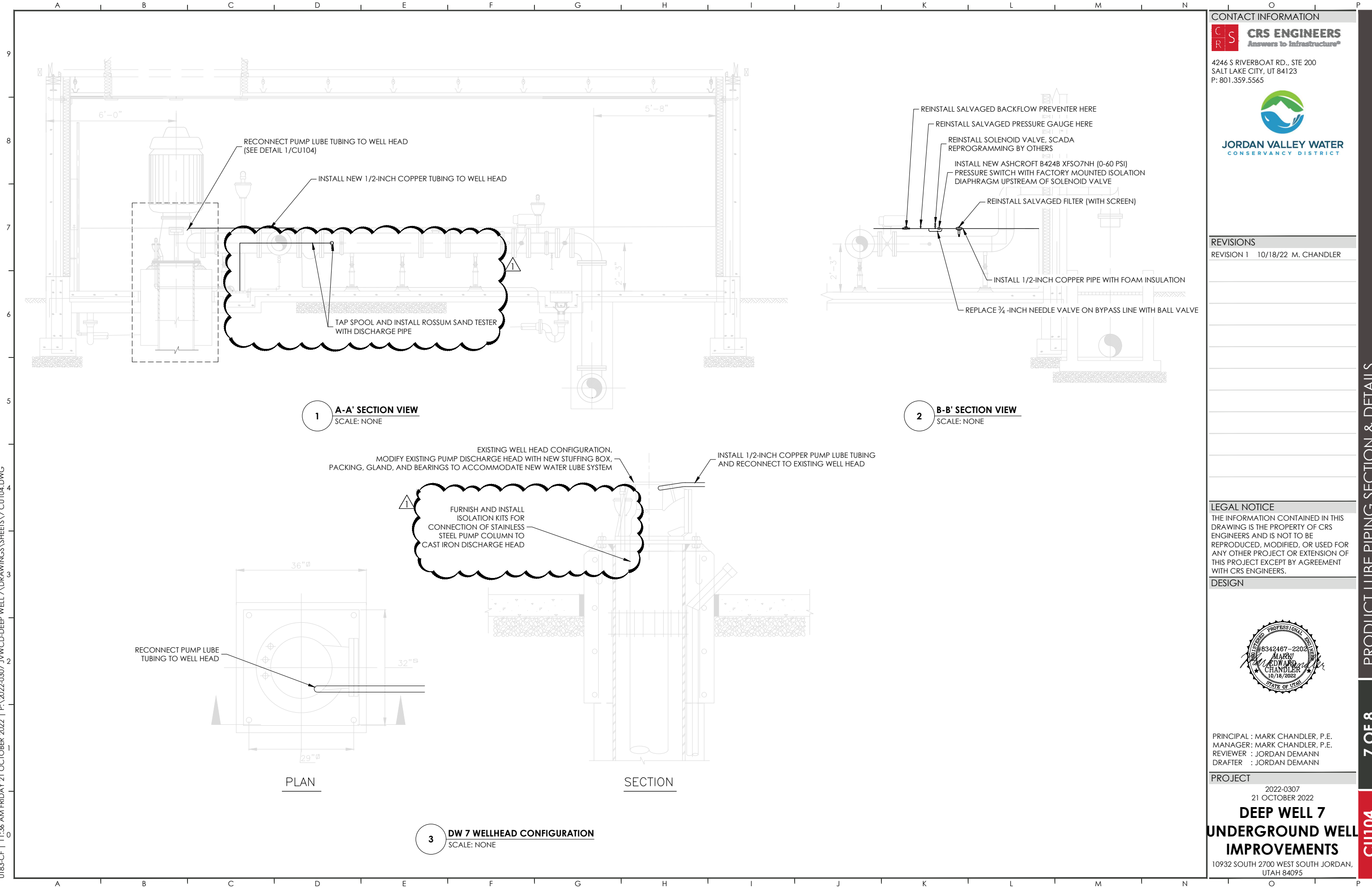
10932 SOUTH 2700 WEST SOUTH JORDAN,
UTAH 84095

PRODUCT LUBE PIPING PLAN

6 OF 8

CU103

UT83-CF | 11:36 AM FRIDAY 21 OCTOBER 2022 | P:\2022-0307 JWVCD-DEEP WELL 7\DRAWINGS\SHEETS\7 CU104.DWG



1 A-A' SECTION VIEW
SCALE: NONE

2 B-B' SECTION VIEW
SCALE: NONE

3 DW 7 WELLHEAD CONFIGURATION
SCALE: NONE

CONTACT INFORMATION

CRS ENGINEERS
Answers to Infrastructure®
4246 S RIVERBOAT RD., STE 200
SALT LAKE CITY, UT 84123
P: 801.359.5565



REVISIONS

REVISION 1 10/18/22 M. CHANDLER

LEGAL NOTICE

THE INFORMATION CONTAINED IN THIS DRAWING IS THE PROPERTY OF CRS ENGINEERS AND IS NOT TO BE REPRODUCED, MODIFIED, OR USED FOR ANY OTHER PROJECT OR EXTENSION OF THIS PROJECT EXCEPT BY AGREEMENT WITH CRS ENGINEERS.

DESIGN



PRINCIPAL : MARK CHANDLER, P.E.
MANAGER: MARK CHANDLER, P.E.
REVIEWER : JORDAN DEMANN, P.E.
DRAFTER : JORDAN DEMANN

PROJECT

2022-0307
21 OCTOBER 2022
**DEEP WELL 7
UNDERGROUND WELL
IMPROVEMENTS**
10932 SOUTH 2700 WEST SOUTH JORDAN,
UTAH 84095