

Final Project Completion Report

Project Name and Number: **Terminal Reservoir Chlorine Booster Facility
& JWTP PEA/PAC Chemical Feed Systems (3608)**

Description: Construction a new chlorination facility at the Terminal Reservoir site and replacement of two chemical feed systems at JWTP.

| | | |
|---------------------------------------|---------------------------|----------------------------|
| Engineer: | MWH Americas, Inc. | Design Status: 100% |
| Original Engineering Contract Amount: | | \$507,344 |
| Current Engineering Contract Amount: | | \$507,344 |

| | | |
|---|----------------------------|----------------------------------|
| Contractor: | Gerber Construction | Construction Status: 100% |
| Original construction contract amount: | | \$1,837,000 |
| Total Change Order amount: | | \$94,211 |
| Current construction contract amount: | | \$1,931,211 |
| Total change orders as a percentage of original contract: | | 5.1% |

| Summary of Change Orders: | | |
|---|---|-----------------|
| | Description | Amount |
| 1 | Chlorine Booster Door Hardware, Polymer Equipment Rental, Dosing Vault Excavation, and Upgrade Fireline. | \$10,714 |
| 2 | City of Taylorsville Building Permit | \$6,444 |
| 3 | Replace Dresser Coupling and Chlorine Booster Anti-Graffiti Coating | \$14,652 |
| 4 | Add JA-3 Manway Access and Carbon Mixer VFD Modifications | \$14,075 |
| 5 | Add Pipe Bollards, Modify Polymer System Piping and Terminal Reservoir Fence Changes | \$10,075 |
| 6 | Polymer System Electrical Revisions, Add Pulsation Dampeners, Modify PAC Level Sensors and Circulation Pump 3 Phase Motors | \$14,751 |
| 7 | Roof Drain Piping & Drainage Modifications, HMI Screen Protection, Fiber Optics Modifications, JA-3 Vault Hatch Handrail and Terminal Reservoir Entrance Widening | \$13,384 |
| 8 | Relocate Thermostat and Add Polymer System Service Platform | \$7,675 |
| 9 | Chlorine Booster Outside Lighting, Relocate Tree and Additional Fiber Optic Modifications | \$2,441 |
| TOTAL AMOUNT OF ALL CHANGE ORDERS: | | \$94,211 |

Final Project Completion Report



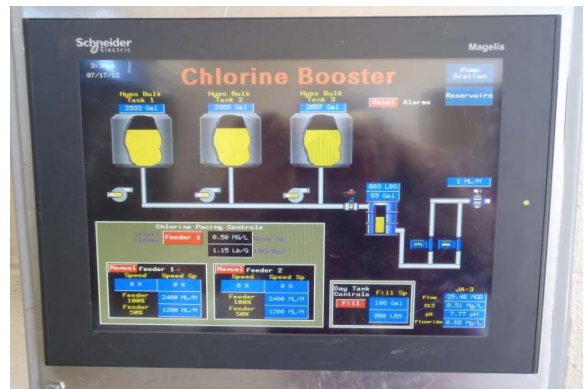
Chlorine Booster Facility & Chlorine Injection Vault



Chlorine Feed Pumps



Construction of the JA-3 Chlorine Injection Vault



Chlorine Booster HMI Panel



JVWTP PEA Polymer Mixing and Feed System



JVWTP PAC Mixer