

SECTION A-A  
SECTIONS B-B AND C-C SIMILAR

**NOTES - REACH 4**  
 For general notes and standard reference drawings, see Dwg. 66-D-1602  
 Hydrostatic test pressure shall be 300 p.s.i.  
 Flanges shall be 300# slip on welding unless otherwise noted

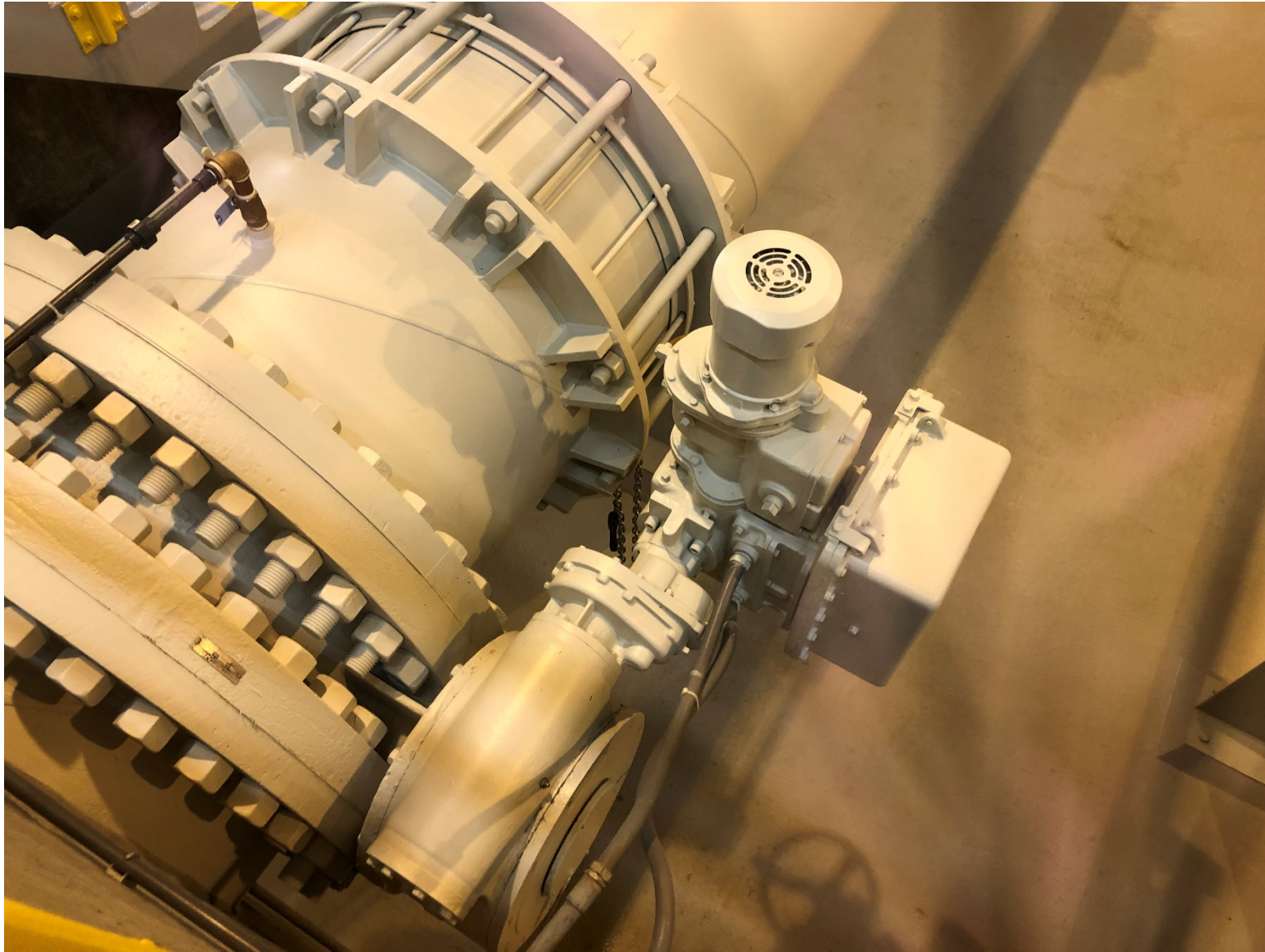
<b>ALWAYS THINK SAFETY</b>	
UNITED STATES DEPARTMENT OF THE INTERIOR BUREAU OF RECLAMATION CENTRAL UTAH PROJECT BONNEVILLE UNIT-UTAH	
<b>JORDAN AQUEDUCT-FLOW CONTROL STRUCTURES AND REACH 3 COMPLETION STEEL MANIFOLDS-REACH 2 AND 4 REACH 4 - PLAN AND SECTION</b>	
DESIGNED <i>Charles Joyce</i>	TECHNICAL APPROVAL <i>S. J. ...</i>
DRAWN <i>Charles Joyce</i>	SUBMITTED <i>E. S. ...</i>
CHECKED <i>Robert ...</i>	APPROVED <i>E. S. ...</i>
CHIEF, MECHANICAL BRANCH	
DENVER, COLORADO	AUG 21, 1960
SHEET 3 OF 4	66-D-1624



*Figure 1: Existing Actuator and Gear Box on 42-Inch Butterfly Valve*



Figure 2: 42-Inch Butterfly Valve Hand Controls on Upper Mezzanine



*Figure 3: Existing Equipment of 42-Inch Butterfly Valve from Upper Mezanine*

AMERICAN VALVE & HYDRANT  
A DIVISION OF AMERICAN CAST IRON PIPE CO  
BIRMINGHAM, ALA

LINE 700B SERV

1-7-31

Figure 4: Existing 42-Inch Butterfly Valve Name Plate



Figure 5: Existing 42-Inch Butterfly Valve Actuator Controls



Figure 6: Upper LimiTorque Name Plate



Figure 7: LimiTorque Name Plate





Figure 8: LimiTorque Name Plate



Figure 9: Electrical Disconnect



Figure 10: Existing 78-Inch Butterfly Valve Actuator



Figure 11: Existing 78-Inch Butterfly Valve Actuator Controls (Inside Enclosure)



Figure 12: 78-Inch Butterfly Valve Actuator



Figure 13: 78-Inch Butterfly Valve Actuator Electrical Disconnect

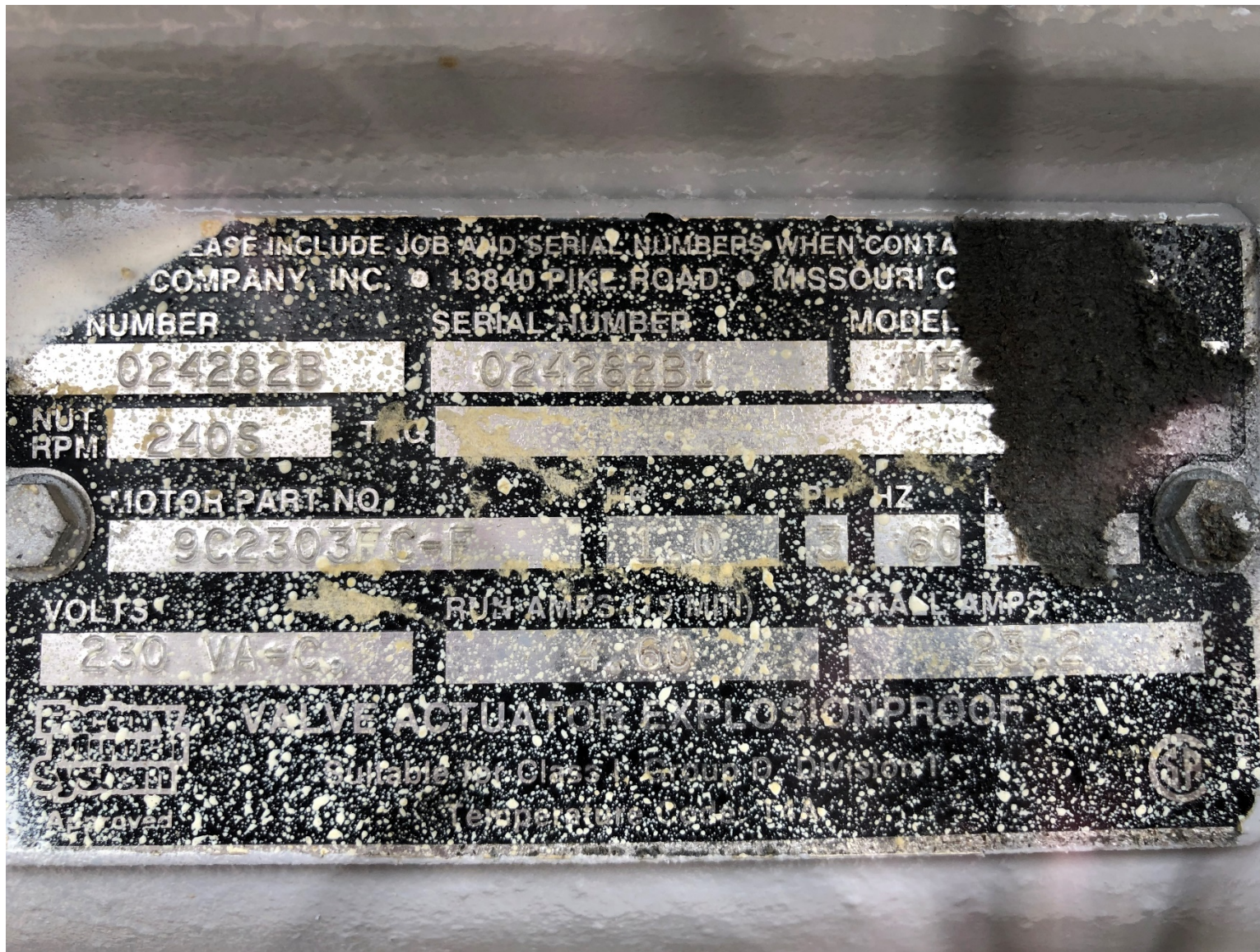


Figure 14: 78-Inch Butterfly Valve Actuator Name Plate

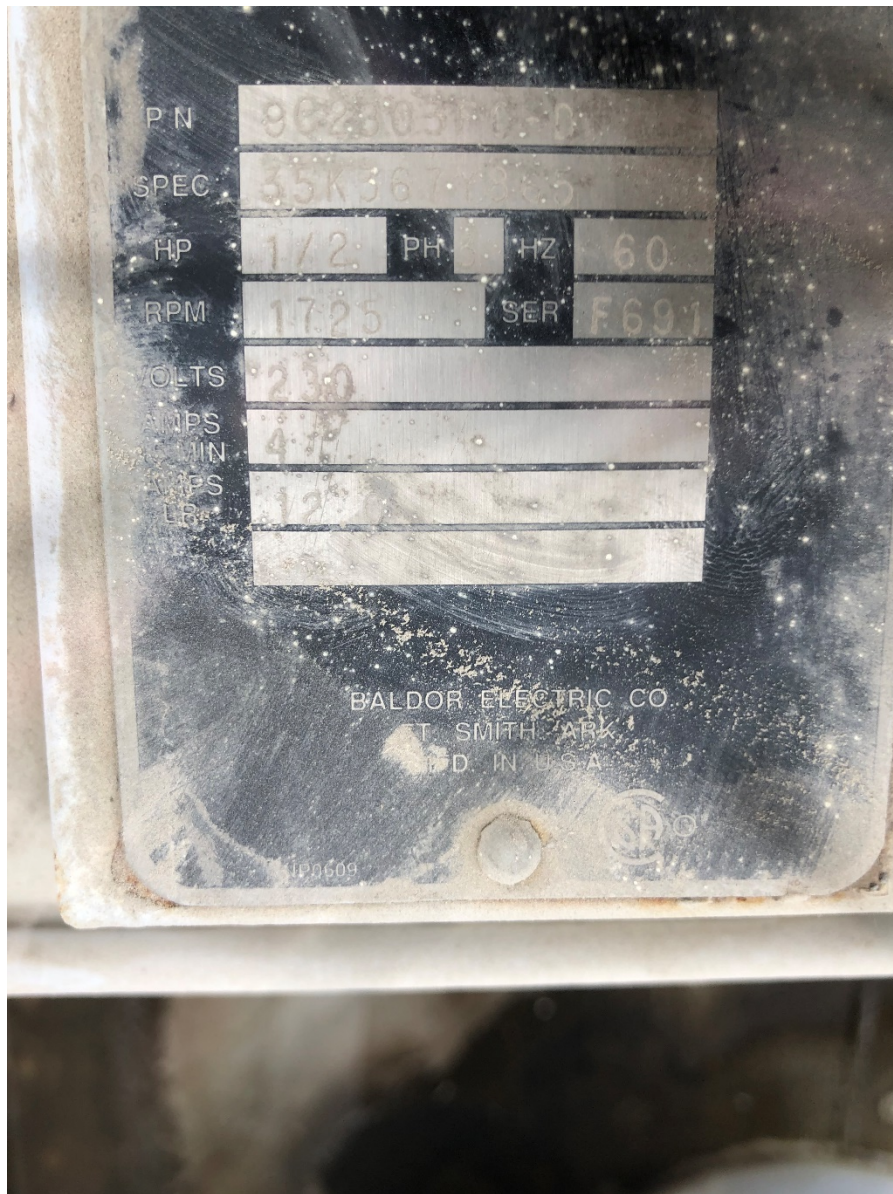


Figure 15: Actuator Name Plate