

**ADDENDUM NO 1
TO
CONTRACT DOCUMENTS
FOR
SERWTP Influent Vault Rehabilitation**

DISTRICT PROJECT NO.: 4367

02/10/2025

This addendum is hereby attached to and made part of the Contract Documents. The addendum consists of two (2) pages of written text (including this cover sheet) and two (2) pages of drawings. Each Bidder shall acknowledge receipt of this addendum on the bid (page C-1).

1. Changes to Bid Documents:
 - A. Bid document Page A-4, Notice Inviting Bids has been updated. Sealed Bids will be received until 11:00 am on Monday February 24, 2025.

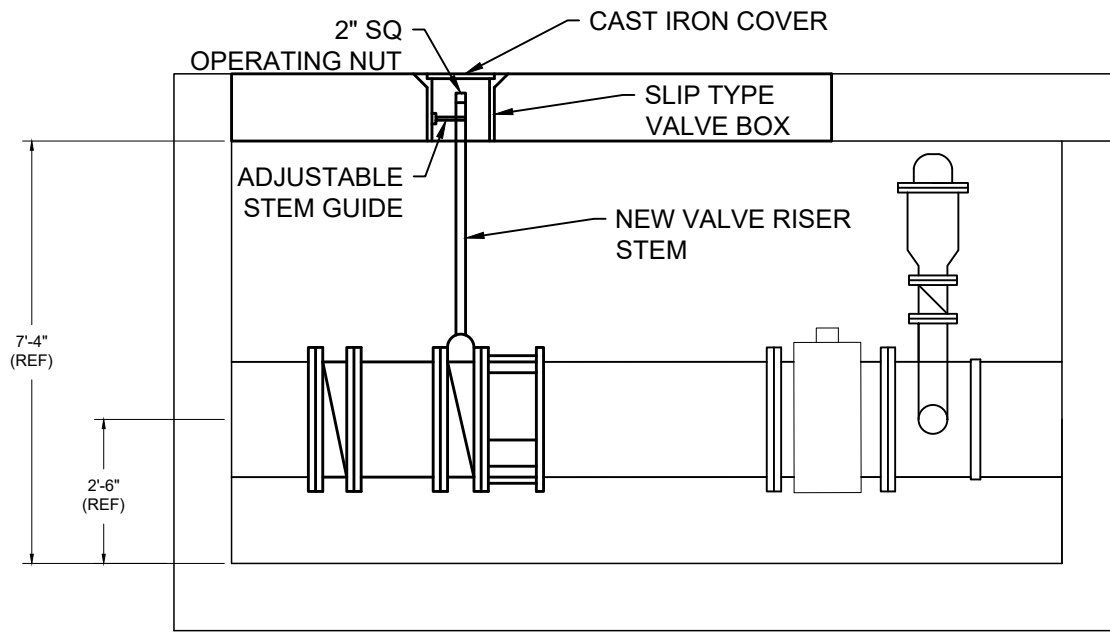
2. Changes to Drawings:
 - A. Drawing M-2 has been updated and is attached to this addendum to include a seal coat layer to be added on the vault roof.
 - B. Drawing M-3 has been updated and is attached to this addendum to display the correct number of actuators to be added to the vault gallery. Note: The bid schedule is unchanged and did show the correct number of actuators.

3. Answers to questions:
 - A. Q: What is the shutdown timing allowed? A: Specification 01 01 10.101.05.A states that shutdowns cannot occur between April 15 and October 1 and can last a maximum of 28 days.
 - B. Q: Can you clarify the painting requirements? A: Drawing M1, note 2 states that all piping and valves, new and existing, must be coated in the vault while drawing M3, note 2 states that only the new valves and disturbed piping is to be coated. The intent is a full vault recoat in the influent vault, but only paint what is necessary in the filter gallery.
 - C. Q: How late can questions be asked on this project? A: Questions can be asked up to 2 business days before the bids are due.

JORDAN VALLEY WATER CONSERVANCY DISTRICT

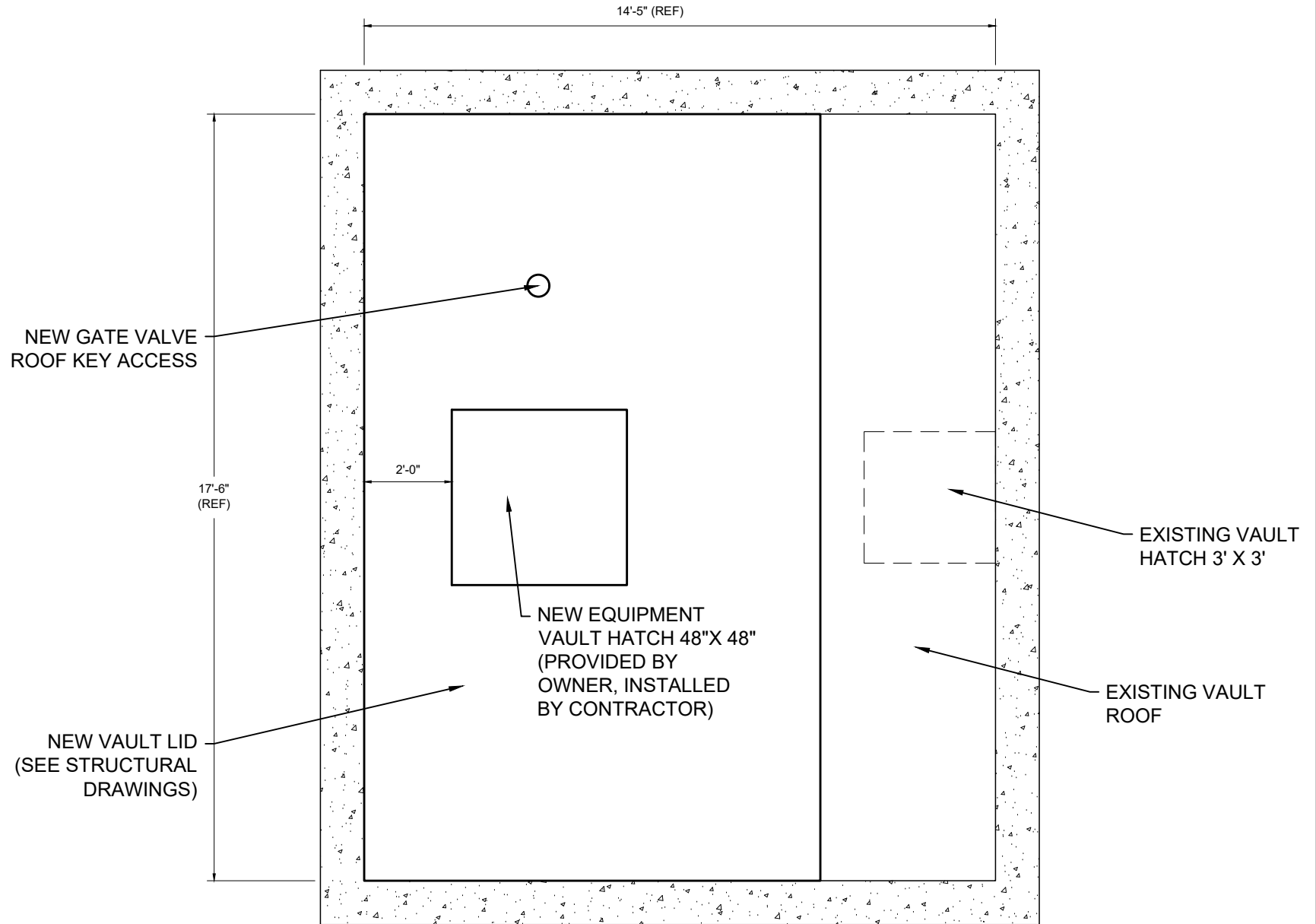
A handwritten signature in black ink, appearing to read 'Conor Tyson', written over a horizontal line.

Conor Tyson
Registered Engineer



SECTION A-A

GENERAL NOTES:
 1. SEAL COAT VAULT ROOF SURFACE WITH BITUMINOUS SURFACE COATING COMPOUND.



PLAN



REV.	DESCRIPTION	BY	DATE
1	Revise Actuator Count, Add waterproofing	CDT	02/07/2025

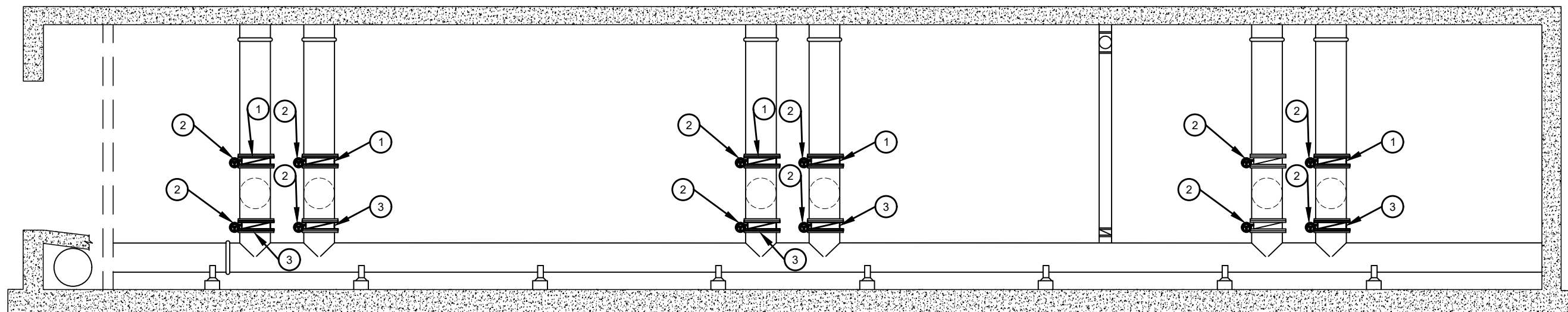
JORDAN VALLEY WATER CONSERVANCY DISTRICT
 8215 South 1300 West
 West Jordan, UT 84088
 801-565-4300

LINE IS 1/8" AT FULL SIZE (IF NOT 1" - SCALE ACCORDINGLY)	ORIGINAL SIZE B
SCALE: 1:40	
DESIGN:	CDT
DRAWING:	CDT
PROJ. MGR:	CDT
APPROVAL:	DRM

SERWTP INFLUENT VAULT REHABILITATION

NEW VAULT ROOF INFLUENT VAULT

DATE	01/23/2025
PROJECT NUMBER	4367
DRAWING NUMBER	M2
SHEET NUMBER	8 OF 15



SECTION

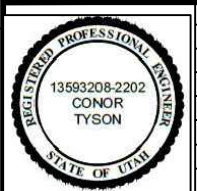
EQUIPMENT SCHEDULE				
NUMBER	DESCRIPTION	SIZE	COUNT	NOTES
1	BUTTERFLY VALVE	24"	5	PRATT, BRAY, AV-TEK OR APPROVED EQUAL
2	ELECTRONIC ACTUATOR	-	12	AUMA, ROTORK, OR LIMITORQUE. SEE NOTES
3	HIGH PERFORMANCE DOUBLE OFFSET BUTTERFLY VALVE	24"	5	AV-TEK DEX, VAG EKN, OR APPROVED EQUAL

GENERAL NOTES:

1. USE STAINLESS STEEL BOLTS AND NUTS
2. ALL NEW VALVES, PLUS ALL METAL PIPING AND FITTINGS COATINGS DISTURBED DURING CONSTRUCTION SHALL BE COATED WITH A HIGH SOLIDS TWO COMPONENT EPOXY COATING SYSTEM. THE EPOXY COATING SHALL BE AMERON, AMERLOCK 400, MATCHING THE EXISTING BLUE COLOR, OR APPROVED EQUAL.
3. CLEAN AND DISINFECT ALL VALVES BEFORE PUTTING INTO SERVICE.
4. ALL VALVES SHALL BE NSF-61 APPROVED.

ACTUATOR NOTES:

1. 480 VAC, 3 PHASE
2. WORKING PRESSURE = 10 PSI TO 65 PSI



REV.	DESCRIPTION	BY	DATE
1	Revise Actuator Count, Add waterproofing	CDT	02/07/2025

JORDAN VALLEY WATER CONSERVANCY DISTRICT
 8215 South 1300 West
 West Jordan, UT 84088
 801-565-4300

LINE IS 1 INCH
 AT FULL SIZE
 (IF NOT 1" - SCALE ACCORDINGLY)
 SCALE: 1/8" = 1.0'

ORIGINAL SIZE **B**

DESIGN: CDT
 DRAWING: CDT
 PROJ. MGR: CDT
 APPROVAL: DRIM

SERWTP INFLUENT VAULT REHABILITATION

MECHANICAL PLAN
 FILTER GALLERY

DATE	01/23/2025
PROJECT NUMBER	4367
DRAWING NUMBER	M3
SHEET NUMBER	9 OF 15